

PET PREFORM MOLD

smf



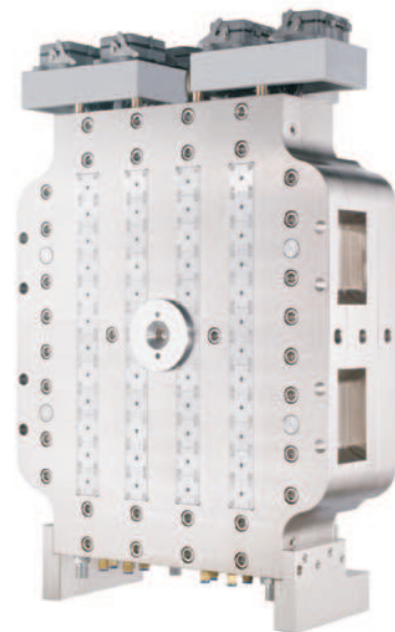
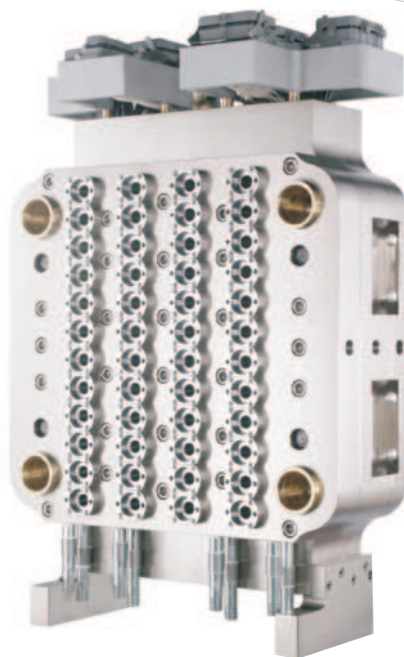
32 cavities

Preform weight: 16.5gr

Neck finish: PCO 28

Pitch size: 60 x 152 mm

Layout: 4 x 8



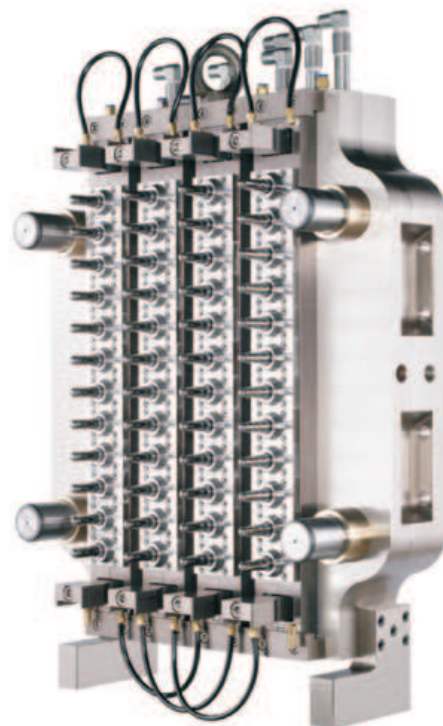
MOULD	32 cav. (16.5 gr)
Mould dimensions W x H	600 x 830mm
Mould thickness	580mm
Mould weight	2311kg
Preforms cooling	Post mould cooling system
Cycle time	10 sec +/- 1
Output	11 520 pcs./h
Electricity consumption	Cold parts without heaters
Air pressure 9/10 bar	1728 l/min
Resin consumption	190 kg/h
Max. cooling capacity	76 032 kcal/h
Water flow	422 l/min
Water pressure loss	2.8 bar

Remarks:

Pure water with anti rust

Inlet water temp. 5~7 °C

Inlet water pressure 7~9 bar



SMF Maschinenfabrik GmbH

Redcarstraße 40, D-53842 Troisdorf-Spich, Germany

Tel: +49 2241 944 886-0 Fax: +49 2241 944 886-99 e-mail: info@smfmbh.com